

# APC International, Ltd.

TEL: +570-726-6961    FAX +570-726-7466    E-mail: apcsales@aol.com

Photo:



Standard type of this sensor:

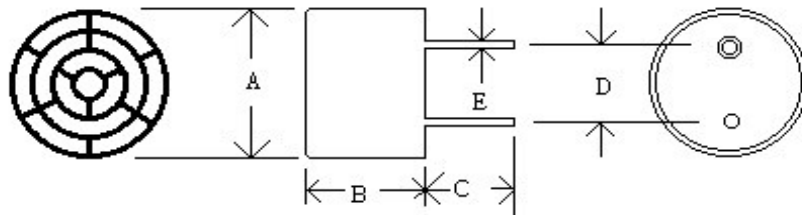
40T-10AW	Catalog # 10-1035
40R-10AW	Catalog # 10-1040

Specification:

PARTS NUMBER	40T-10	40R-10
Center frequency (kHz)	40.0±1.0kHz	40.0±1.0kHz
Sound pressure level (0dB=0.0002 μ bar) *	≥ 112dB	-----
Sensitivity (0dB vs 1V/ μ bar) *	-----	≥ -69dB
Bandwidth (kHz)	4.0/105dB	2.0/-73dB
Beam angle -6dB	80°	
Driving voltage (RMS)	20V	
Working temperature (°C)	-30~80	

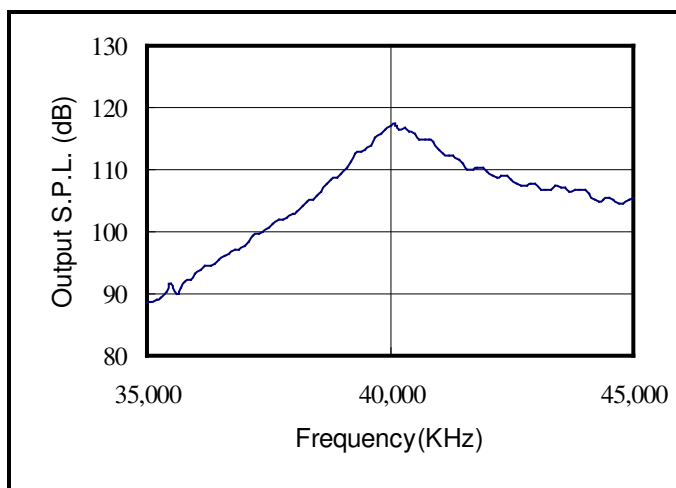
Dimension(40T/R-10P):

- A=9.8±0.2
- B=6.8±0.4
- C=6.9±0.8
- D=5.0±0.2
- E=0.7±0.1
- (UNIT: mm)

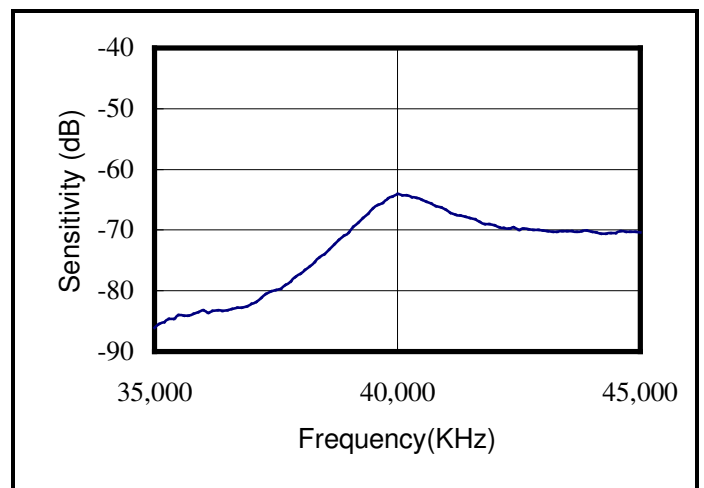


\*Sound Pressure Level: 1 dB vs 0.0002 ubar □  
 measured at 10Vrms, 30 cm distance □  
 \*Sensitivity: 0dB vs 1V/ubar, 30 cm distance

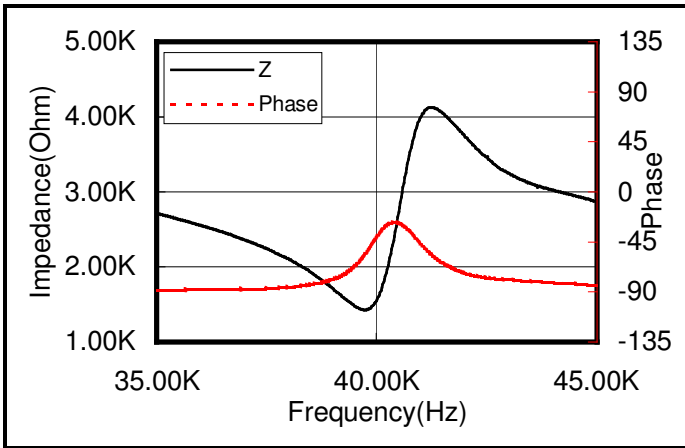
Sound pressure level



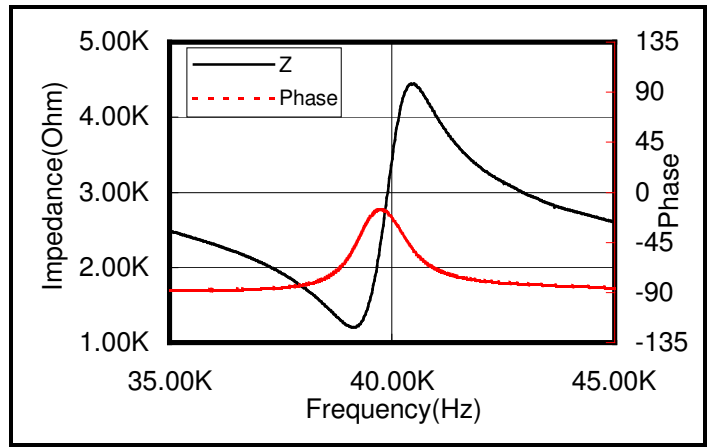
Sensitivity



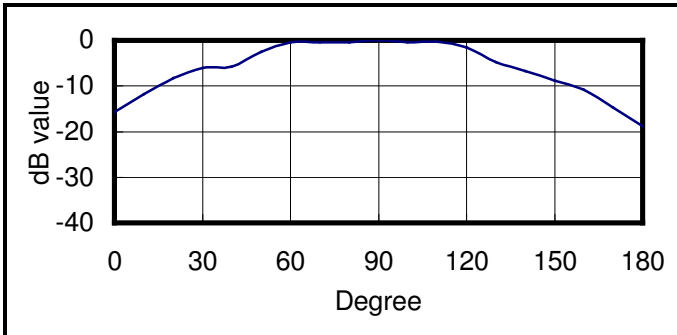
Transmitter impedance



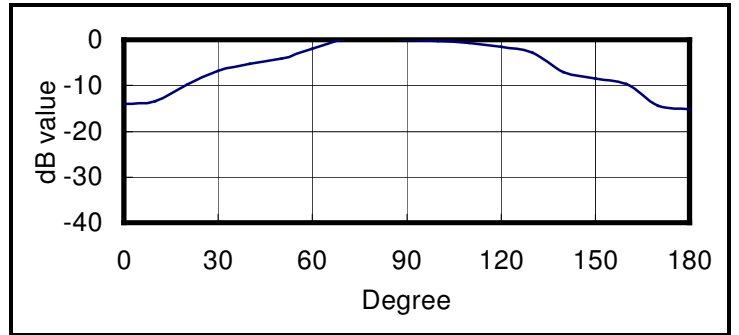
Receiver impedance



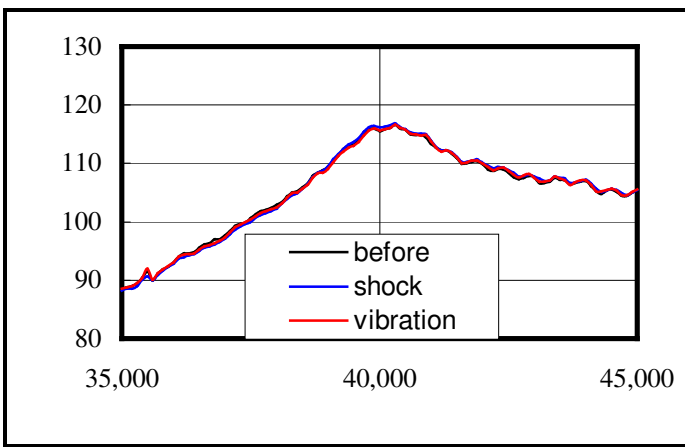
Beam angle of transmitter



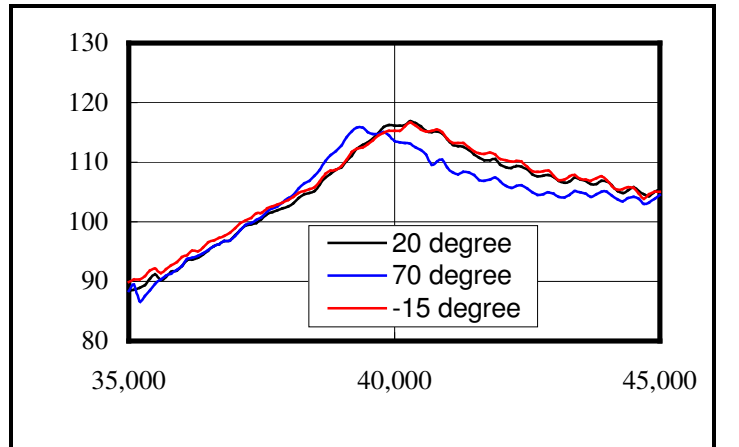
Beam angle of receiver



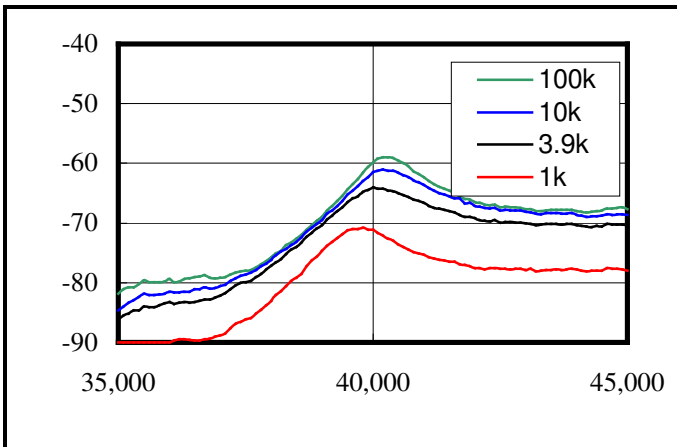
Environment test



Temperature test



Sensitivity change with load impedance



S.P.L. change with driving voltage

