

APC International, Ltd.

TEL: +570-726-6961 FAX +570-726-7466 E-mail: apcsales@aol.com

Photo:



Standard type of this sensor:

25T-16AW	Catalog # 10-1010
25R-16AW	Catalog # 10-1015
25T-16P	Catalog # 10-1020
25R-16P	Catalog # 10-1025

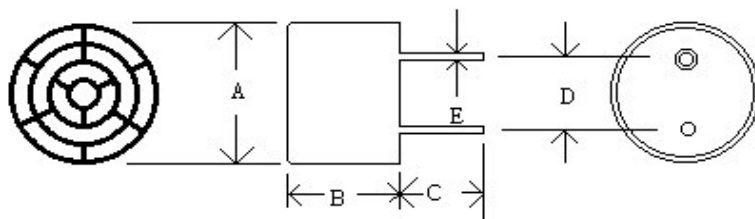
Specification

PARTS NUNBER	25T-16	25R-16
Center frequency (kHz)	25.0±1.0kHz	25.0±1.0kHz
Sound pressure level (0dB=0.0002 μ bar) <input type="checkbox"/>	≥ 112dB	-----
Sensitivity (0dB vs 1V/ μ bar) <input type="checkbox"/>	-----	≥ -65dB
Bandwidth (kHz)	4.0/106dB	3.5/-71dB
Beam angle -6dB	70°	
Driving voltage (RMS)	30V	
Working temperature (°C)	-30~80	

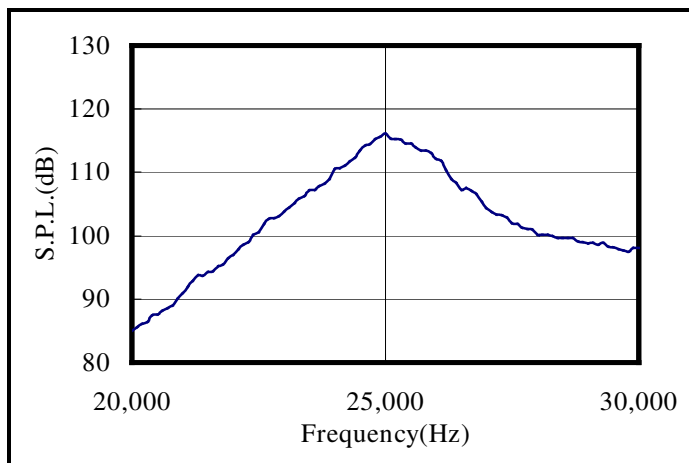
Dimension(25T/R-16P):

- A=16.1±0.3
- B=12.0±0.4
- C= 9.5±1.0
- D=10.0±0.5
- E=1.0±0.1
- (UNIT: mm)

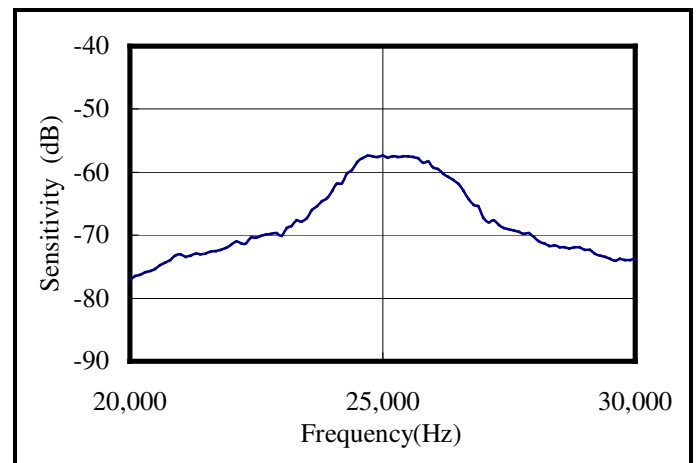
*Sound Pressure Level: 1 dB vs 0.0002 ubar
 measuerd at 10Vrms, 30 cm distance
 *Sensitivity: 0dB vs 1V/ubar, 30 cm distance



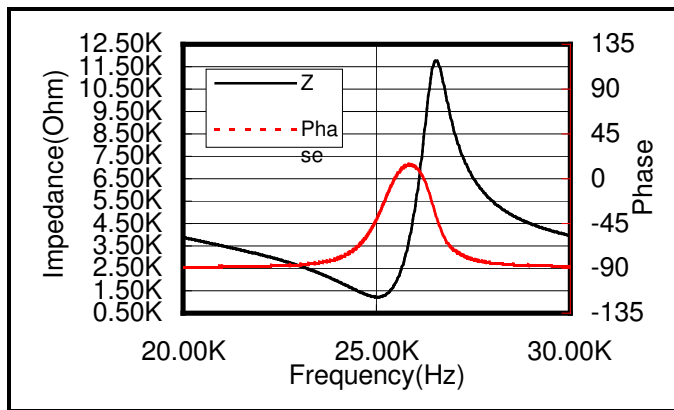
Transmitter impedance



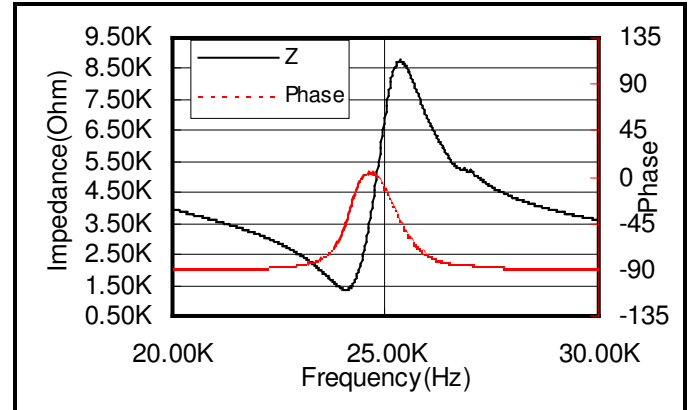
Receiver impedance



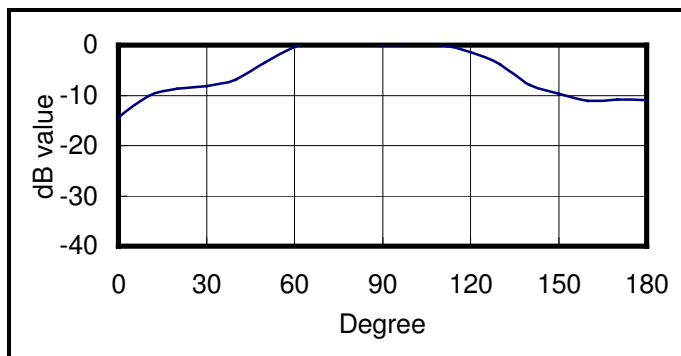
Transmitter impedance



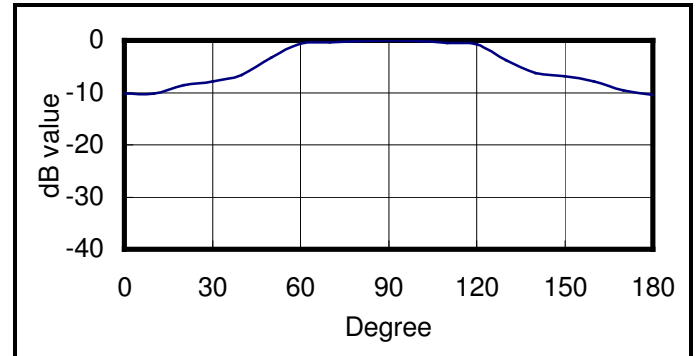
Receiver impedance



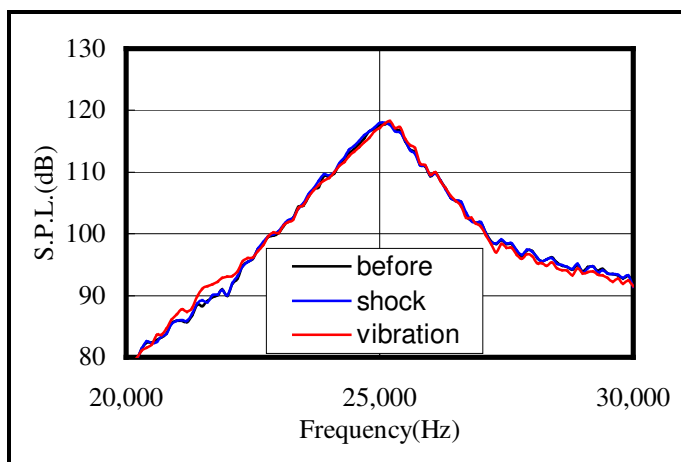
Beam angle of transmitter



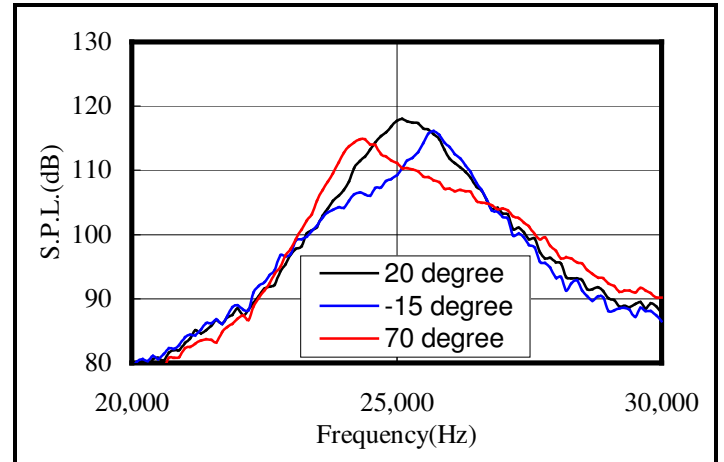
Beam angle of receiver



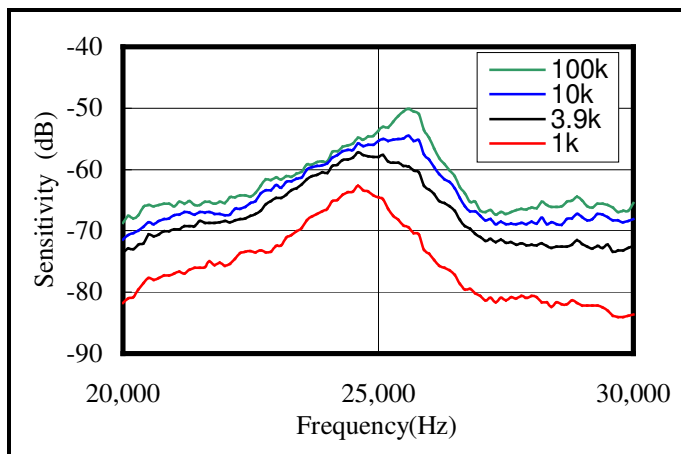
Environment test



Temperature test



Sensitivity change with load resistance



S.P.L. change with driving voltage

